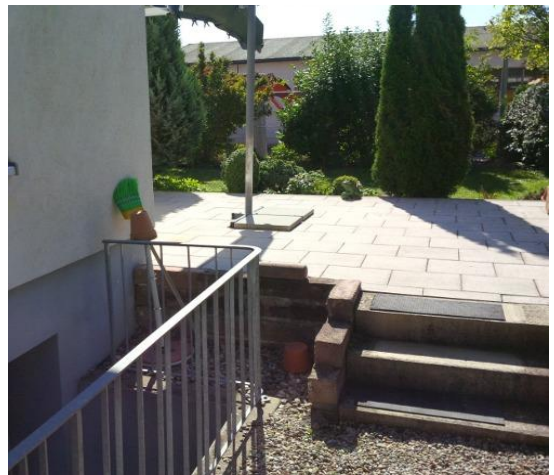


## TERRA-JACK 125 pushes out of a cellar



The contractor Schmid from the German city Neu-Ulm had to lay a new fresh water line as a house connection. For this pipe laying project they used the TERRA-JACK 125. This directional rod pusher can produce directional pilot bores with pulling forces up to 12.5 tons (125 kN, 27'500 lbs). During backreaming the pilot bore is expanded with an expander star and a expander cone. A HDPE pipe is pulled in simultaneously. The total length of this house connection was 18 m (60 ft). A big advantage of the TERRA-JACK is that two operators can easily carry it into a cellar. Together with a wall flange it can be assembled against the cellar wall. The complete house connection took only 3 hours, although the ground consisted of clay and gravel.



The house connection was done out of the cellar underneath the terrace, underneath the front garden to the road. The total length is 18 m (60 ft). The new HDPE pipe OD 50 mm (2") is pulled in.



The drill head reaches the target pit after 18 m (60 ft).



The pilot bore is expanded with the expander cone Ø 75 mm (3"). The new HDPE pipe OD 50 mm (2") is pulled in. The connection to the main water line is prepared.



The new water line is pulled in.



After pipe pulling the TERRA-JACK is disassembled. It can be carried easily by two persons. The water line is connected to the house installation.