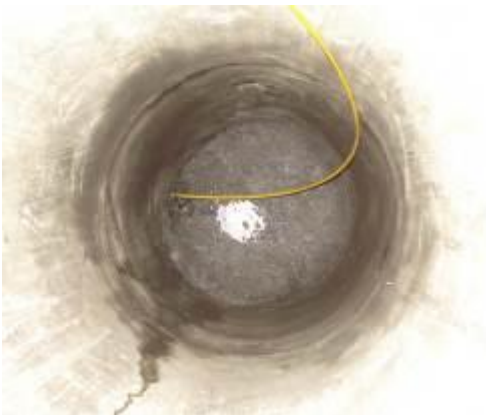


Cable Burster X 300 C in a manhole



The Swiss contractor Zehnder Spezialbau AG has used the TERRA-EXTRACTOR X 300 C for a renewal of an old sewage pipe. The old pipe made of concrete was riddled with local damages and misalignments. After inserting of the pulling cable the cable burster was installed in a manhole 800 mm (32"). The new pipe was installed by threadable short pipe modules HDPE. Those pipe modules are 480 mm (18.9") in effective length and have an inner diameter of 140 mm (5.5") and an outer diameter of 180 mm (7.1"). They were mounted (screwed on) in a manhole 600 mm (24").



The old pipe was first cleaned out by a canal cleaning vehicle. Then the pulling rod was introduced.



The \varnothing 22 mm (0.86") pulling cable is connected to the pulling rod and ready to be pulled into the old pipe.

**Cable Burster
TERRA-EXTRACTOR X 300 C**



The cable burster with bent front plate is ready for installation in the manhole \varnothing 800 mm (32").



The TERRA-EXTRACTOR X 300 C installed in the manhole \varnothing 800 mm (32").



The bursting head with three static cutters. The short pipe modules can be threaded in directly into the bursting head.



The bursting head in the manhole \varnothing 600 mm (24")



The mounted short pipe module during bursting.

TERRA AG, Hauptstrasse 92, 6260 Reiden, Switzerland, tel.: +41-62-749 10 10, fax: +41-62-749 10 11
e-mail: office@terra-eu.eu, internet: www.terra-eu.eu